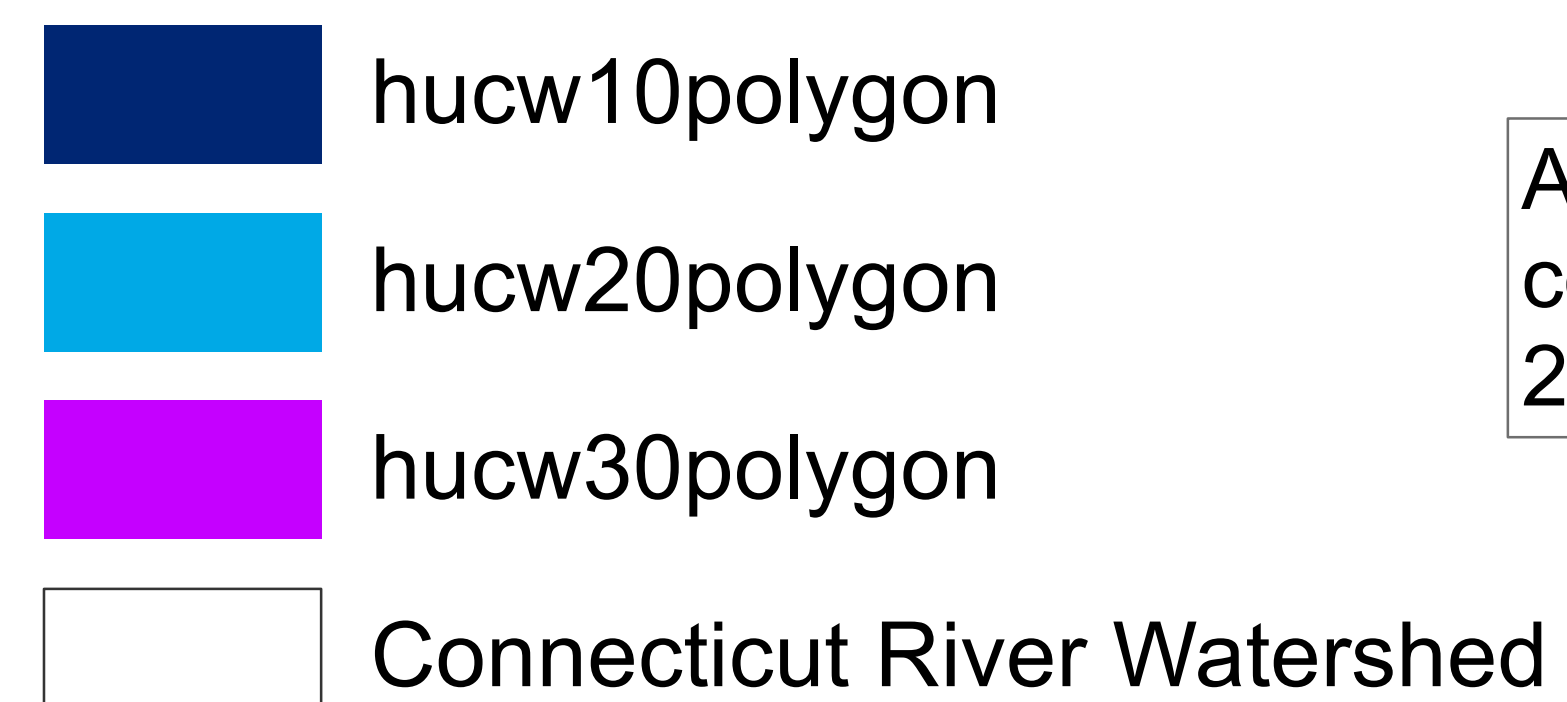
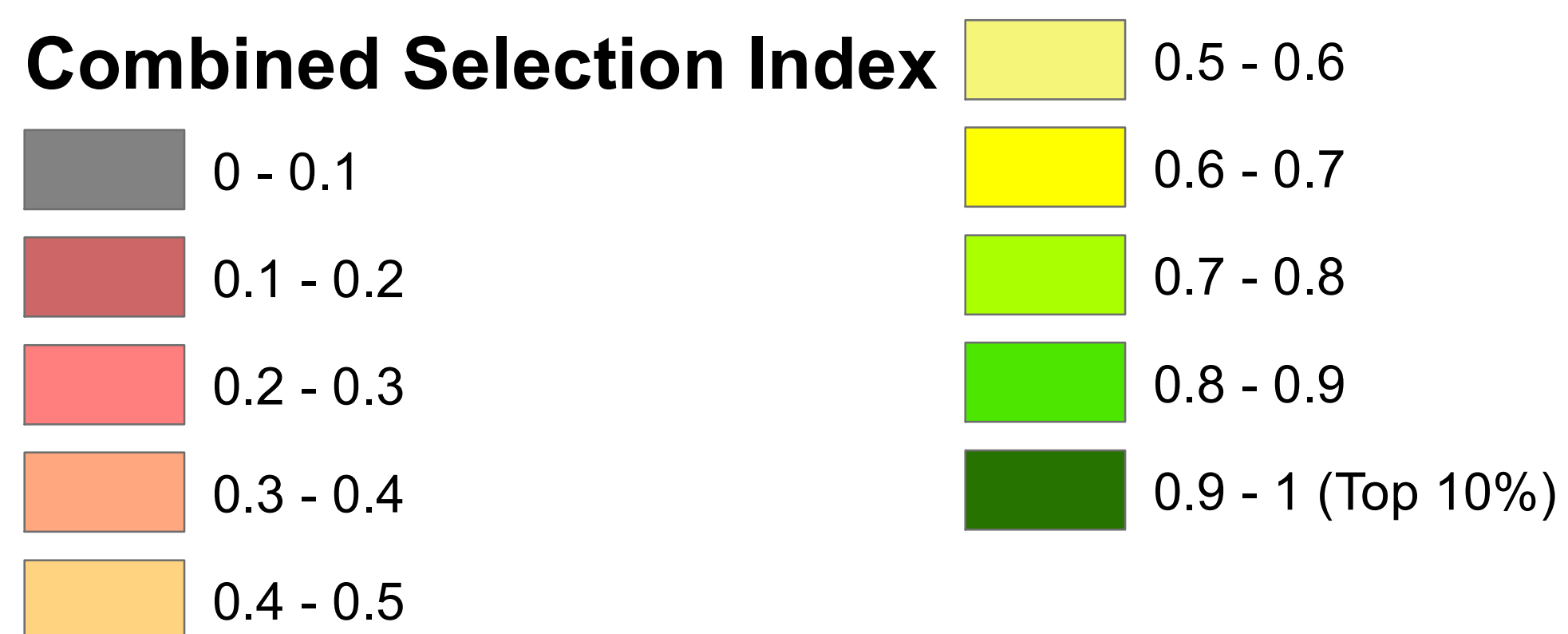
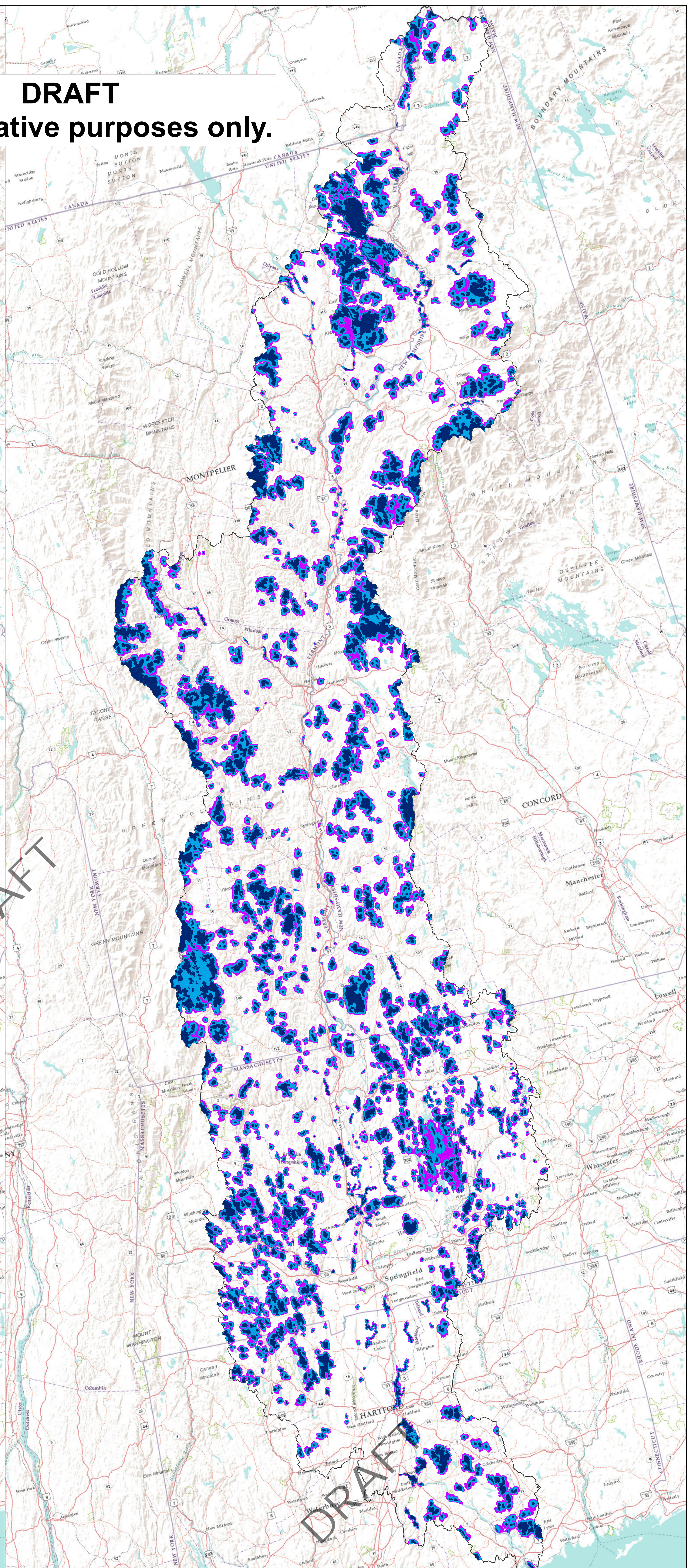
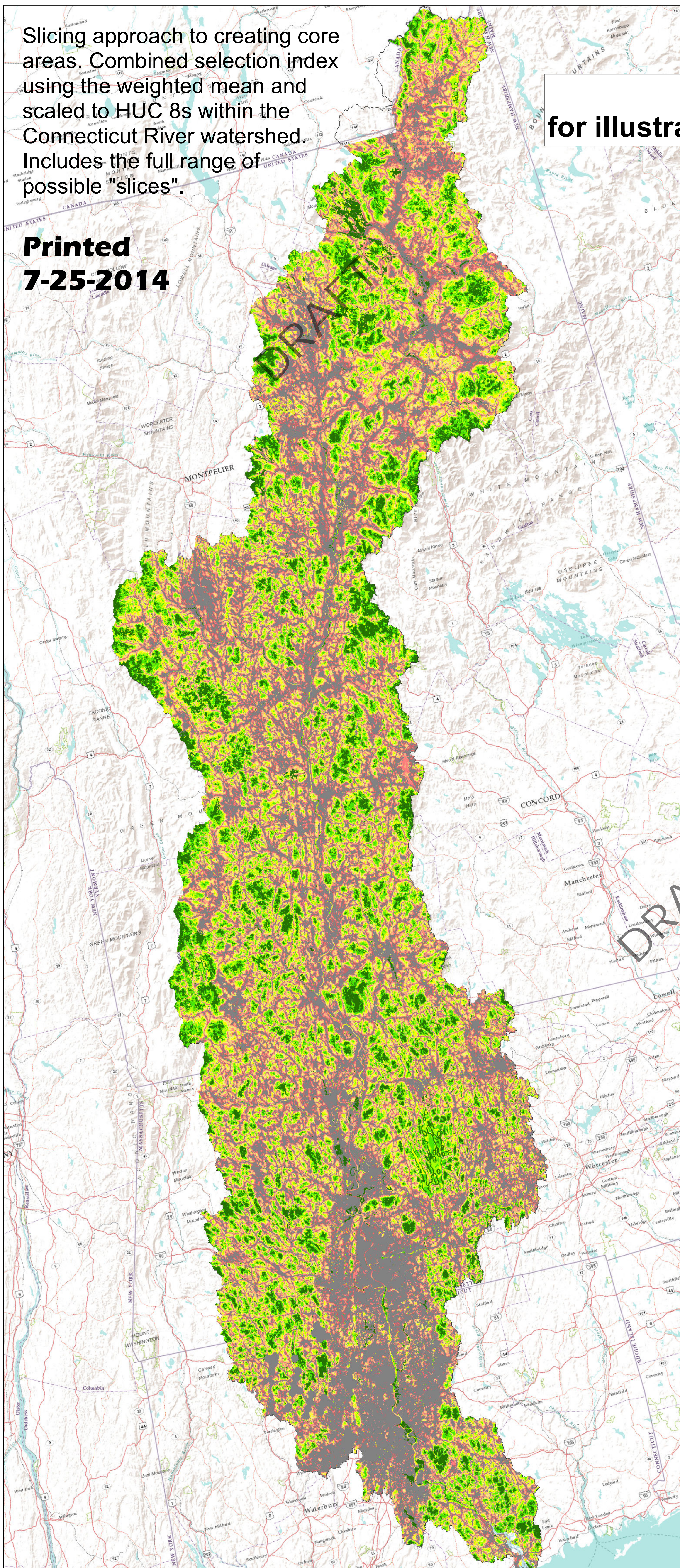


Slicing approach to creating core areas. Combined selection index using the weighted mean and scaled to HUC 8s within the Connecticut River watershed. Includes the full range of possible "slices".

**Printed
7-25-2014**

**DRAFT
for illustrative purposes only.**



Algorithmic approach to creating core areas. Includes the top 10%, 20%, and 30%.